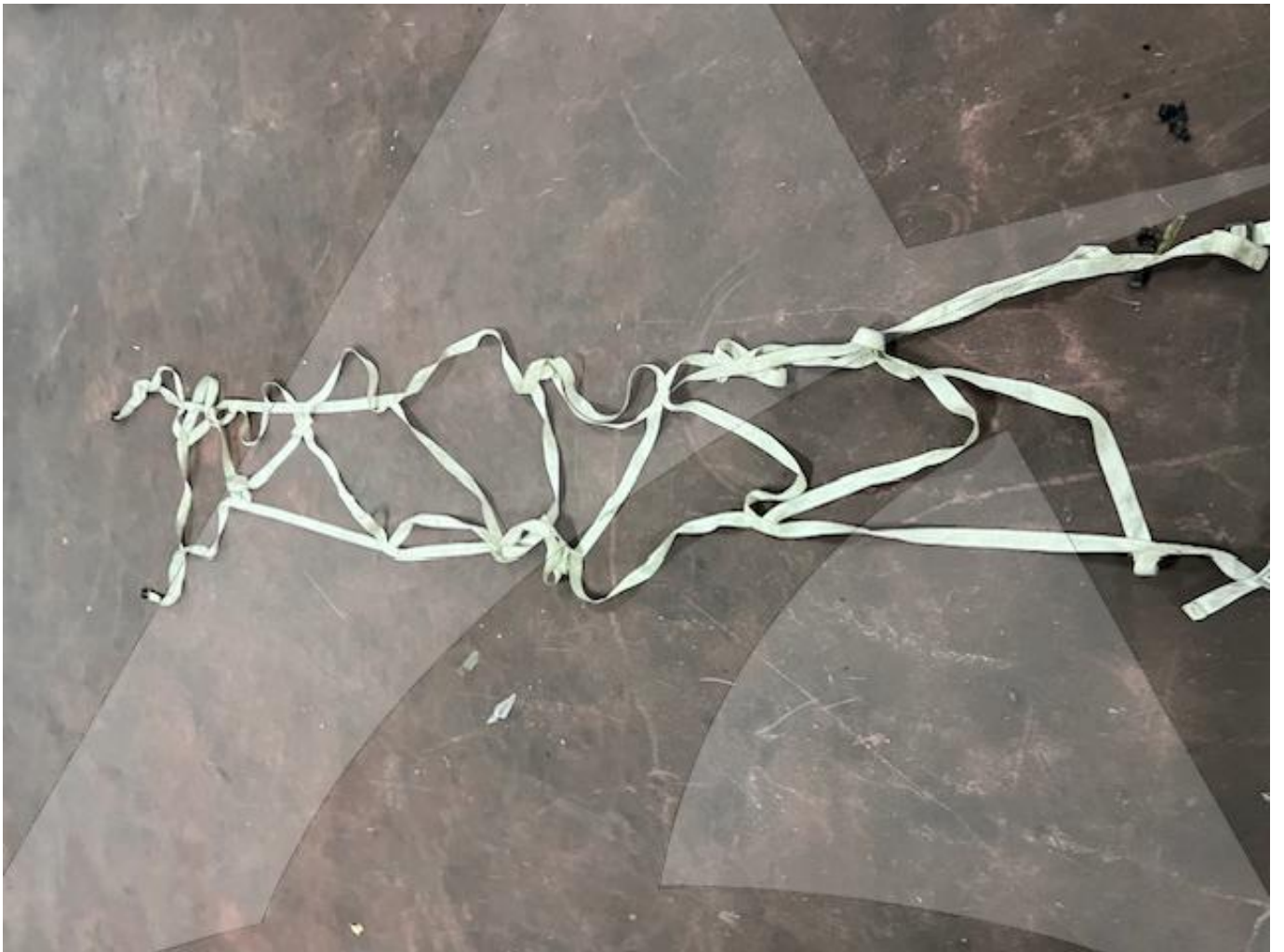


Global Sales:
Units 5 & 6, Oak Tree Place,
Matford Business Park
Exeter. Devon. EX2 8WA, UK.

Head Office:
7178 Headley ST SE,
PO Box 649
Ada, MI 49301 USA.

Part Number: F70258-1
Description: NET
ATP Serial Number: PMH0000000EXT
Date: 2026-04-27

Image: 1 of 6

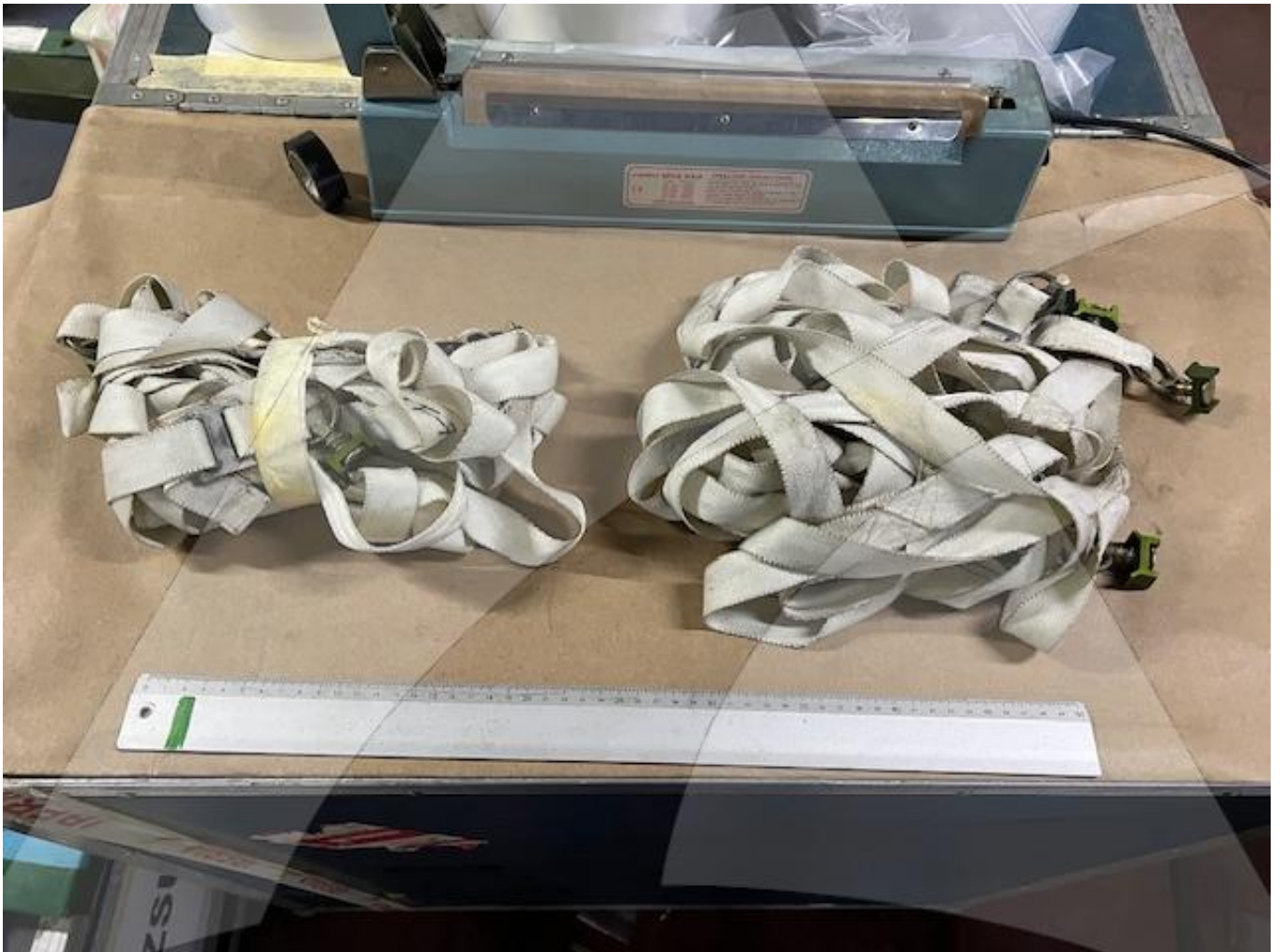


Global Sales:
Units 5 & 6, Oak Tree Place,
Matford Business Park
Exeter. Devon. EX2 8WA, UK.

Head Office:
7178 Headley ST SE,
PO Box 649
Ada, MI 49301 USA.

Part Number: F70258-1
Description: NET
ATP Serial Number: PMH0000000EXT
Date: 2026-04-27

Image: 2 of 6

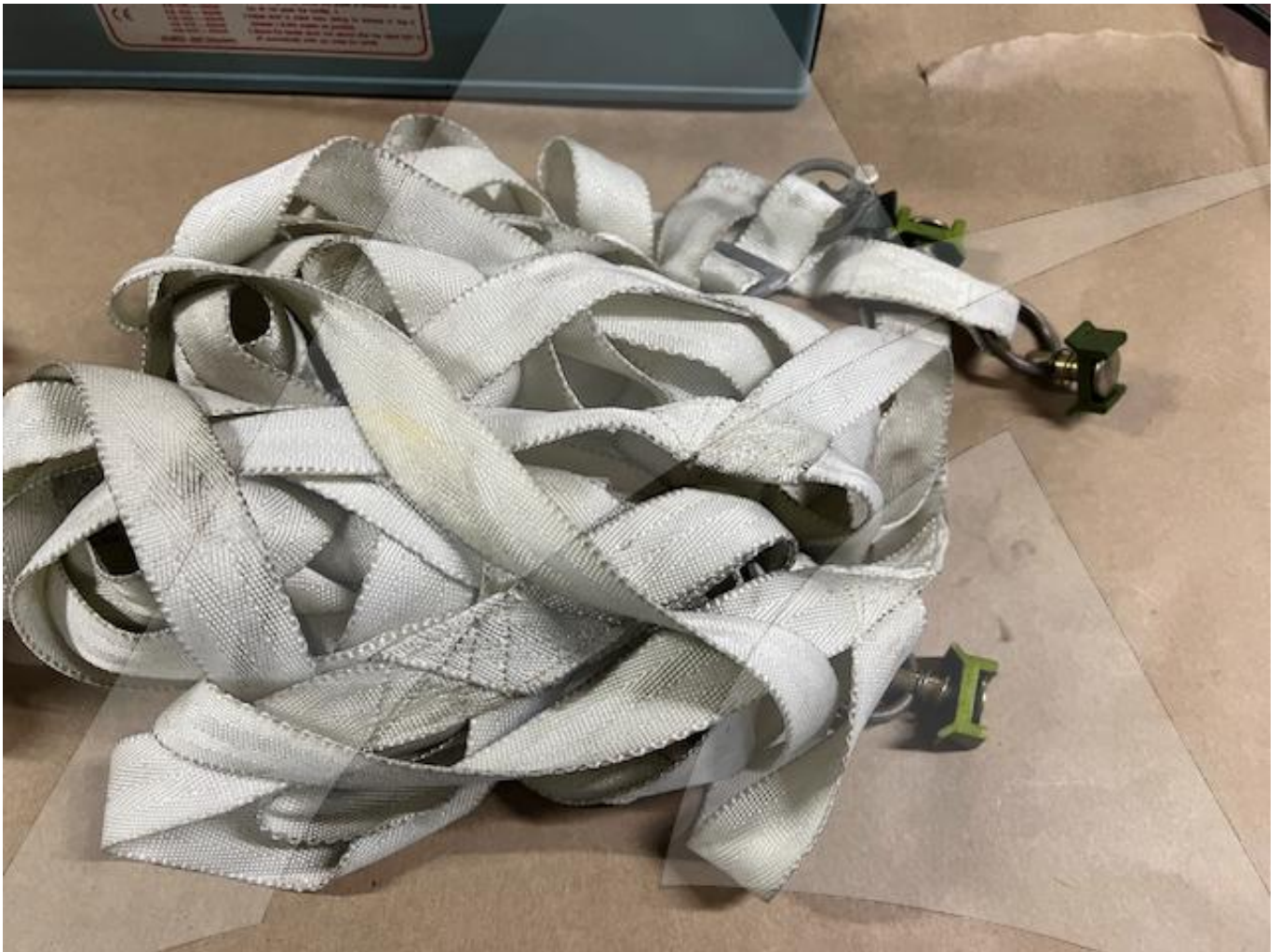


Global Sales:
Units 5 & 6, Oak Tree Place,
Matford Business Park
Exeter. Devon. EX2 8WA, UK.

Head Office:
7178 Headley ST SE,
PO Box 649
Ada, MI 49301 USA.

Part Number: F70258-1
Description: NET
ATP Serial Number: PMH0000000EXT
Date: 2026-04-27

Image: 3 of 6



Global Sales:
Units 5 & 6, Oak Tree Place,
Matford Business Park
Exeter. Devon. EX2 8WA, UK.

Head Office:
7178 Headley ST SE,
PO Box 649
Ada, MI 49301 USA.

Part Number: F70258-1
Description: NET
ATP Serial Number: PMH0000000EXT
Date: 2026-04-27

Image: 4 of 6



Global Sales:
Units 5 & 6, Oak Tree Place,
Matford Business Park
Exeter. Devon. EX2 8WA, UK.

Head Office:
7178 Headley ST SE,
PO Box 649
Ada, MI 49301 USA.

Part Number: F70258-1
Description: NET
ATP Serial Number: PMH0000000EXT
Date: 2026-04-27

Image: 5 of 6



Global Sales:
Units 5 & 6, Oak Tree Place,
Matford Business Park
Exeter. Devon. EX2 8WA, UK.

Head Office:
7178 Headley ST SE,
PO Box 649
Ada, MI 49301 USA.

Part Number: F70258-1
Description: NET
ATP Serial Number: PMH0000000EXT
Date: 2026-04-27

Image: 6 of 6

