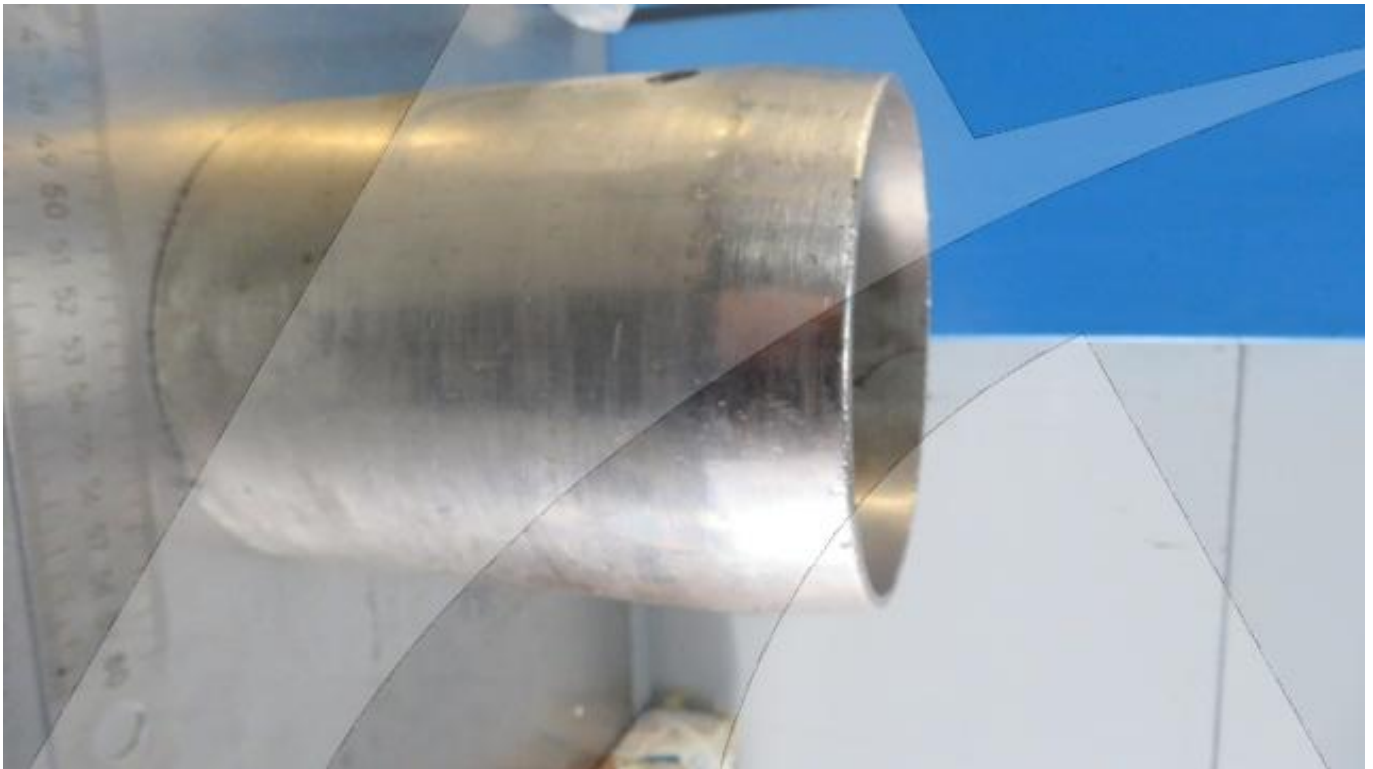


Global Sales:
Units 5 & 6, Oak Tree Place,
Matford Business Park
Exeter. Devon. EX2 8WA, UK.

Head Office:
7178 Headley ST SE,
PO Box 649
Ada, MI 49301 USA.

Part Number: F46754
Description: TOOL
ATP Serial Number: PMH0000000EXT
Date: 2026-07-02

Image: 1 of 7



Global Sales:
Units 5 & 6, Oak Tree Place,
Matford Business Park
Exeter. Devon. EX2 8WA, UK.

Head Office:
7178 Headley ST SE,
PO Box 649
Ada, MI 49301 USA.

Part Number: F46754
Description: TOOL
ATP Serial Number: PMH0000000EXT
Date: 2026-07-02

Image: 2 of 7

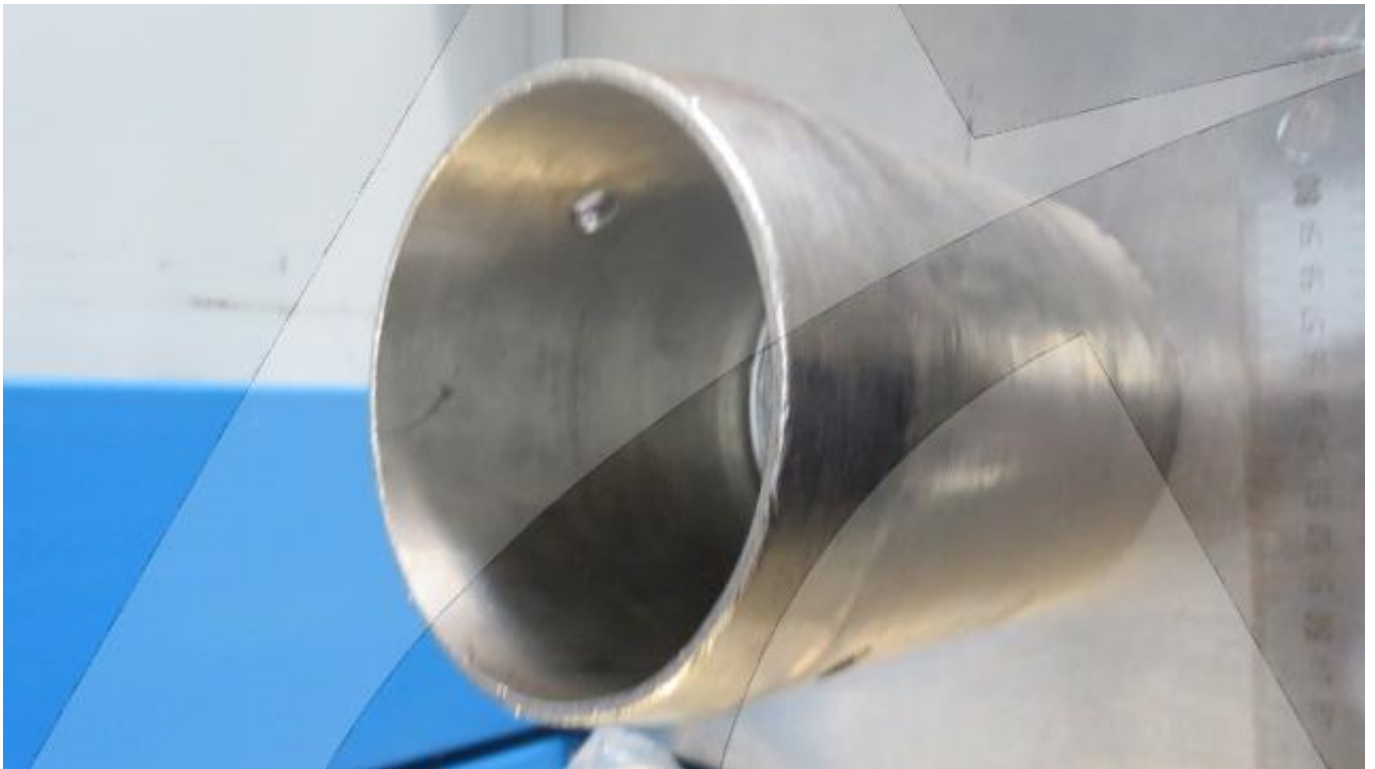


Global Sales:
Units 5 & 6, Oak Tree Place,
Matford Business Park
Exeter. Devon. EX2 8WA, UK.

Head Office:
7178 Headley ST SE,
PO Box 649
Ada, MI 49301 USA.

Part Number: F46754
Description: TOOL
ATP Serial Number: PMH0000000EXT
Date: 2026-07-02

Image: 3 of 7



Global Sales:
Units 5 & 6, Oak Tree Place,
Matford Business Park
Exeter. Devon. EX2 8WA, UK.

Head Office:
7178 Headley ST SE,
PO Box 649
Ada, MI 49301 USA.

Part Number: F46754
Description: TOOL
ATP Serial Number: PMH0000000EXT
Date: 2026-07-02

Image: 4 of 7



Global Sales:
Units 5 & 6, Oak Tree Place,
Matford Business Park
Exeter. Devon. EX2 8WA, UK.

Head Office:
7178 Headley ST SE,
PO Box 649
Ada, MI 49301 USA.

Part Number: F46754
Description: TOOL
ATP Serial Number: PMH0000000EXT
Date: 2026-07-02

Image: 5 of 7

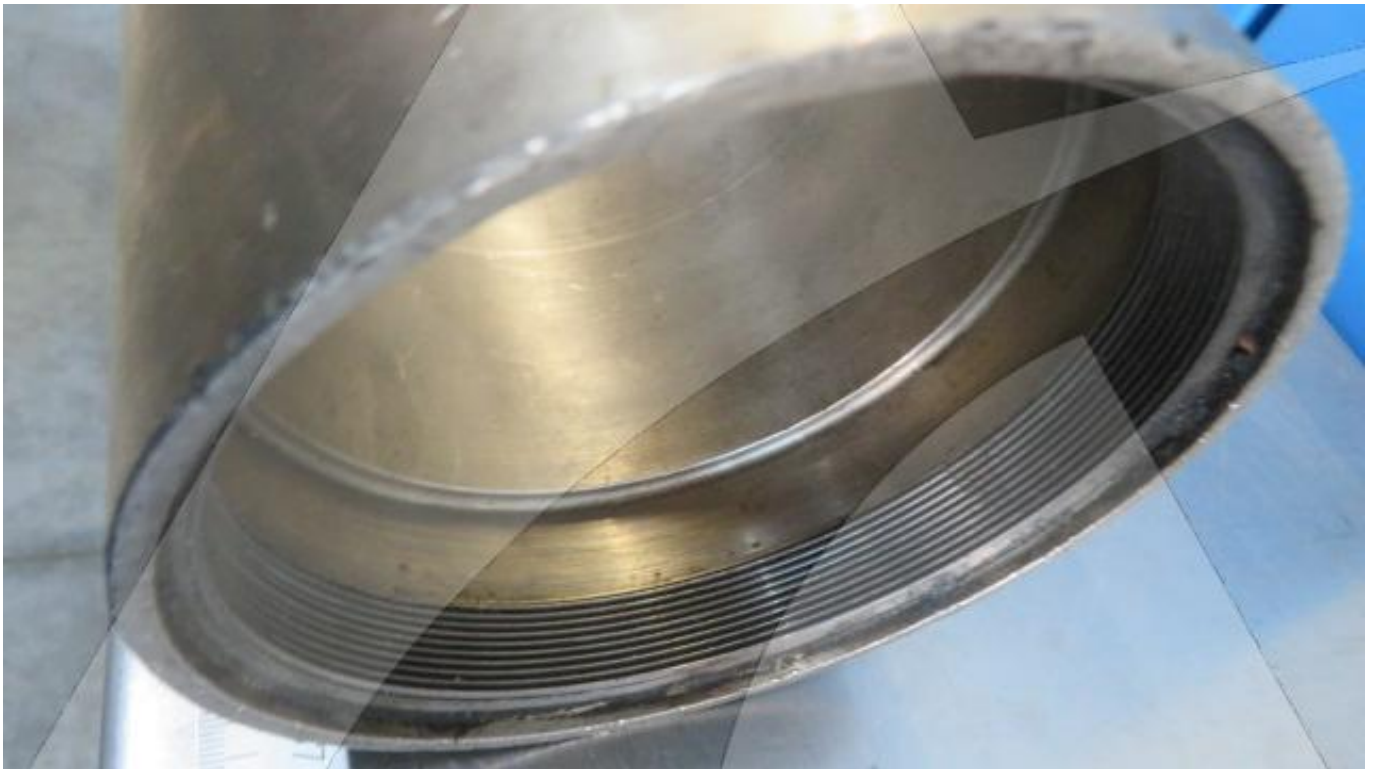


Global Sales:
Units 5 & 6, Oak Tree Place,
Matford Business Park
Exeter. Devon. EX2 8WA, UK.

Head Office:
7178 Headley ST SE,
PO Box 649
Ada, MI 49301 USA.

Part Number: F46754
Description: TOOL
ATP Serial Number: PMH0000000EXT
Date: 2026-07-02

Image: 6 of 7



Global Sales:
Units 5 & 6, Oak Tree Place,
Matford Business Park
Exeter. Devon. EX2 8WA, UK.

Head Office:
7178 Headley ST SE,
PO Box 649
Ada, MI 49301 USA.

Part Number: F46754
Description: TOOL
ATP Serial Number: PMH0000000EXT
Date: 2026-07-02

Image: 7 of 7

