

Global Sales:  
Units 5 & 6, Oak Tree Place,  
Matford Business Park  
Exeter. Devon. EX2 8WA, UK.

Head Office:  
7178 Headley ST SE,  
PO Box 649  
Ada, MI 49301 USA.

**Part Number:** C47261  
**Description:** WRENCH AXL NUT NLG  
**ATP Serial Number:** PMH0  
**Date:** 2026-07-05

**Image:** 1 of 4

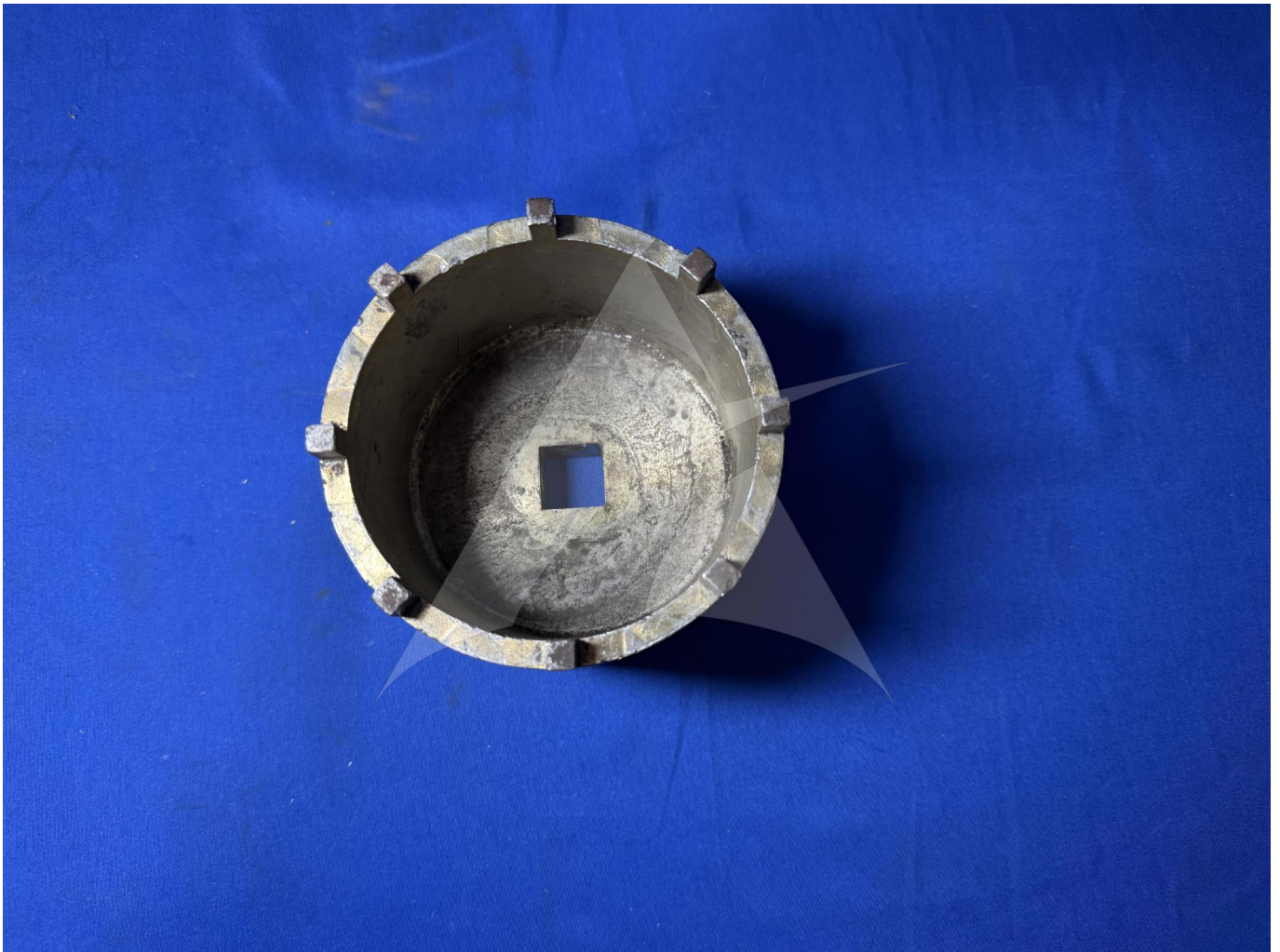


Global Sales:  
Units 5 & 6, Oak Tree Place,  
Matford Business Park  
Exeter. Devon. EX2 8WA, UK.

Head Office:  
7178 Headley ST SE,  
PO Box 649  
Ada, MI 49301 USA.

**Part Number:** C47261  
**Description:** WRENCH AXL NUT NLG  
**ATP Serial Number:** PMH0  
**Date:** 2026-07-05

**Image:** 2 of 4

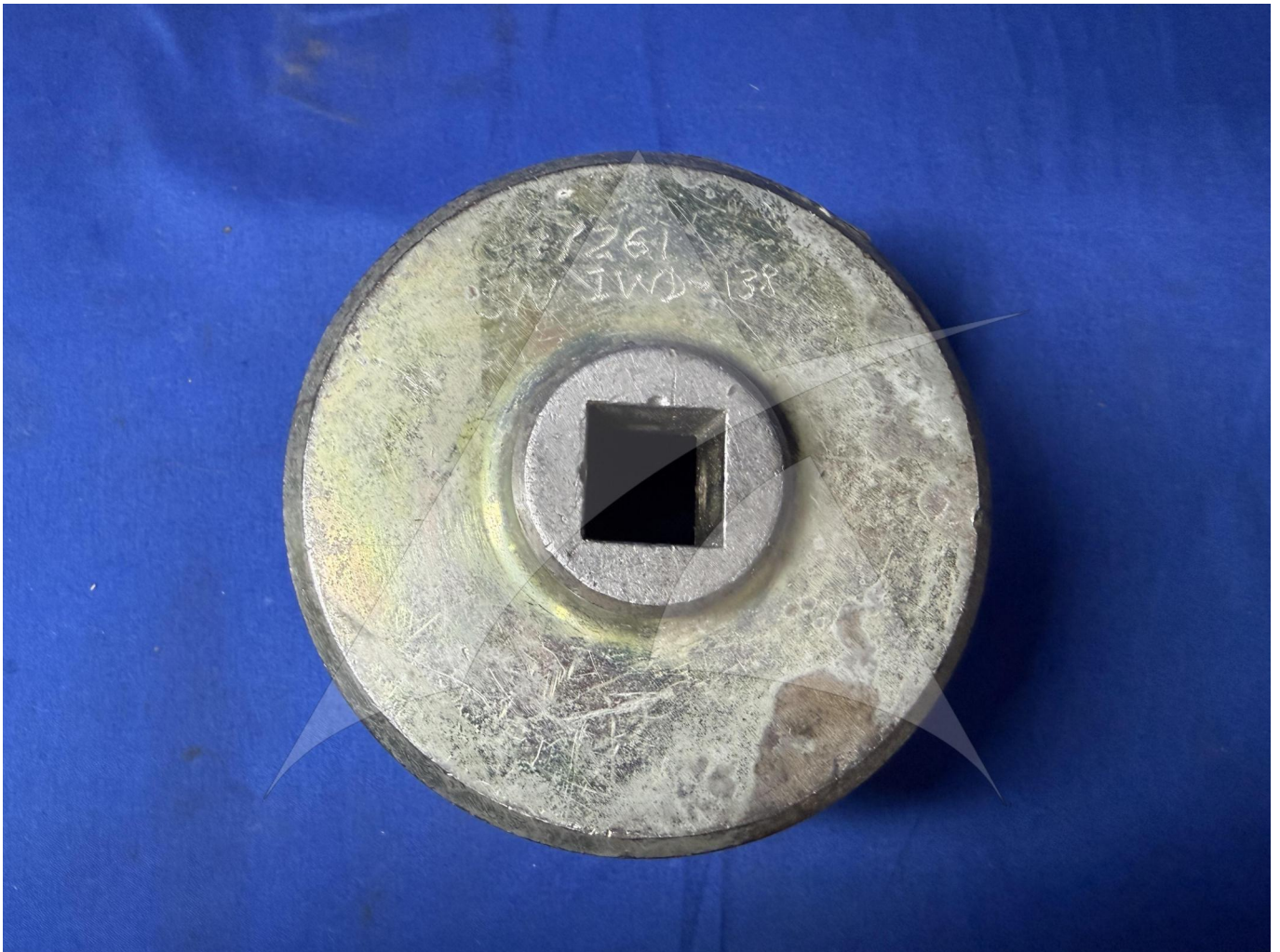


Global Sales:  
Units 5 & 6, Oak Tree Place,  
Matford Business Park  
Exeter. Devon. EX2 8WA, UK.

Head Office:  
7178 Headley ST SE,  
PO Box 649  
Ada, MI 49301 USA.

**Part Number:** C47261  
**Description:** WRENCH AXL NUT NLG  
**ATP Serial Number:** PMH0  
**Date:** 2026-07-05

**Image:** 3 of 4



Global Sales:  
Units 5 & 6, Oak Tree Place,  
Matford Business Park  
Exeter. Devon. EX2 8WA, UK.

Head Office:  
7178 Headley ST SE,  
PO Box 649  
Ada, MI 49301 USA.

**Part Number:** C47261  
**Description:** WRENCH AXL NUT NLG  
**ATP Serial Number:** PMH0  
**Date:** 2026-07-05

**Image:** 4 of 4

