

Global Sales:  
Units 5 & 6, Oak Tree Place,  
Matford Business Park  
Exeter. Devon. EX2 8WA, UK.

Head Office:  
7178 Headley ST SE,  
PO Box 649  
Ada, MI 49301 USA.

**Part Number:** 5955282-1  
**Description:** TORQUE ADAPTOR ASSEMBLY  
**ATP Serial Number:** PMH0000210EXT  
**Date:** 2026-04-23

**Image:** 1 of 4

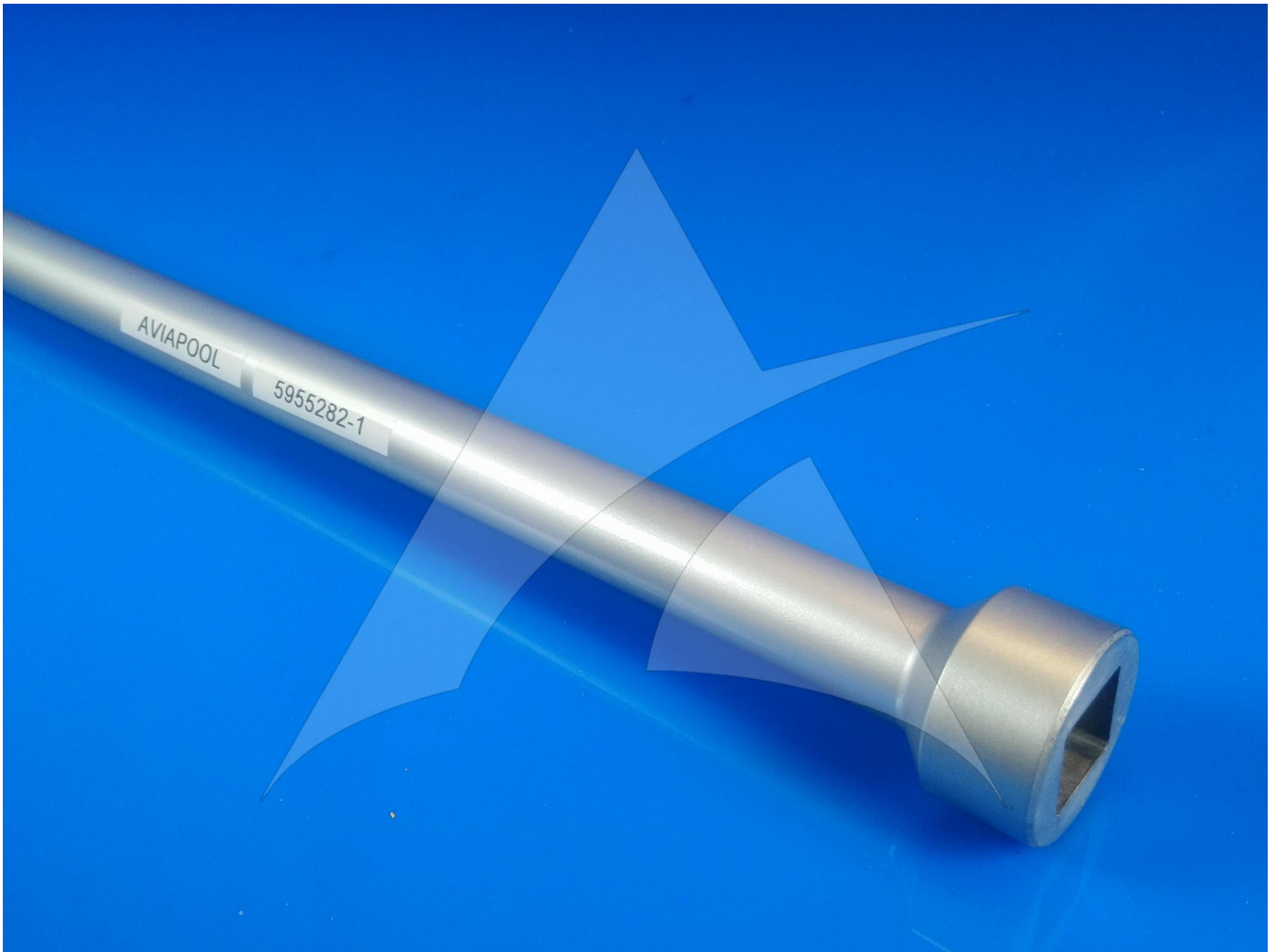


Global Sales:  
Units 5 & 6, Oak Tree Place,  
Matford Business Park  
Exeter. Devon. EX2 8WA, UK.

Head Office:  
7178 Headley ST SE,  
PO Box 649  
Ada, MI 49301 USA.

**Part Number:** 5955282-1  
**Description:** TORQUE ADAPTOR ASSEMBLY  
**ATP Serial Number:** PMH0000210EXT  
**Date:** 2026-04-23

**Image:** 2 of 4

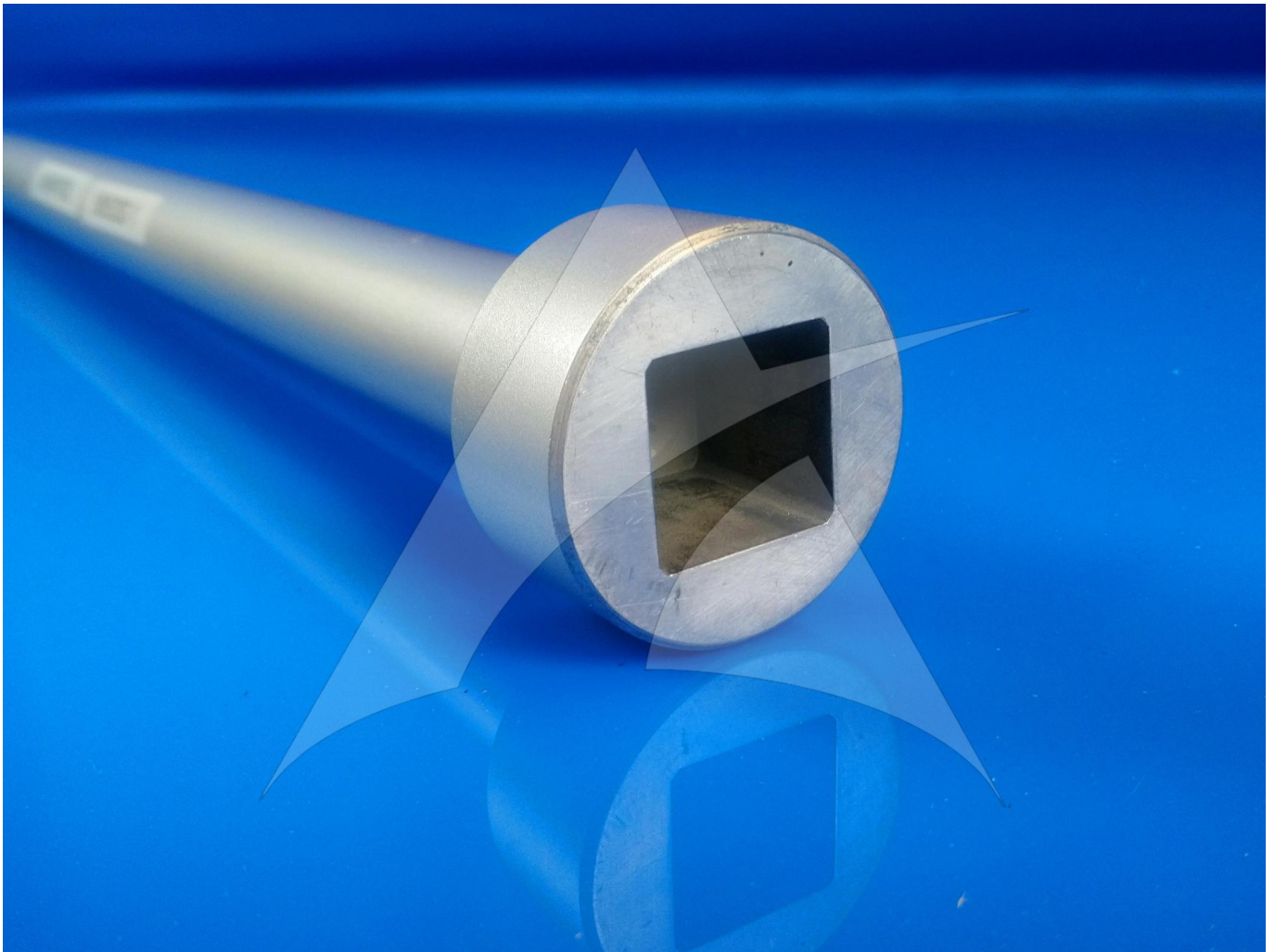


Global Sales:  
Units 5 & 6, Oak Tree Place,  
Matford Business Park  
Exeter. Devon. EX2 8WA, UK.

Head Office:  
7178 Headley ST SE,  
PO Box 649  
Ada, MI 49301 USA.

**Part Number:** 5955282-1  
**Description:** TORQUE ADAPTOR ASSEMBLY  
**ATP Serial Number:** PMH0000210EXT  
**Date:** 2026-04-23

**Image:** 3 of 4



Global Sales:  
Units 5 & 6, Oak Tree Place,  
Matford Business Park  
Exeter. Devon. EX2 8WA, UK.

Head Office:  
7178 Headley ST SE,  
PO Box 649  
Ada, MI 49301 USA.

**Part Number:** 5955282-1  
**Description:** TORQUE ADAPTOR ASSEMBLY  
**ATP Serial Number:** PMH0000210EXT  
**Date:** 2026-04-23

**Image:** 4 of 4

