

Global Sales:  
Units 5 & 6, Oak Tree Place,  
Matford Business Park  
Exeter. Devon. EX2 8WA, UK.

Head Office:  
7178 Headley ST SE,  
PO Box 649  
Ada, MI 49301 USA.

**Part Number:** LE48401Z01-170-69717-409  
**Description:** DRILLING TEMPLATE (BOX 3)  
**ATP Serial Number:** PMH0000000EXT  
**Date:** 2026-05-13

**Image:** 1 of 3

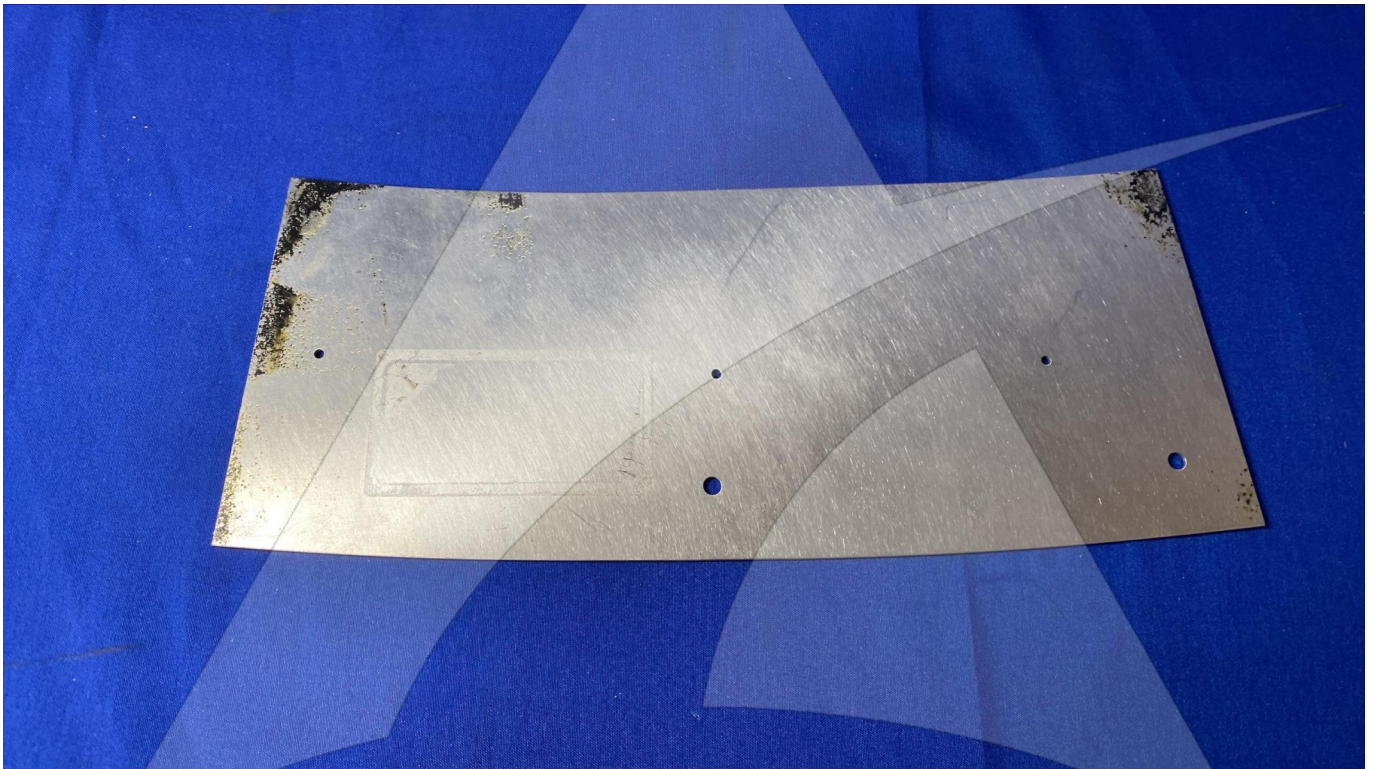


Global Sales:  
Units 5 & 6, Oak Tree Place,  
Matford Business Park  
Exeter. Devon. EX2 8WA, UK.

Head Office:  
7178 Headley ST SE,  
PO Box 649  
Ada, MI 49301 USA.

**Part Number:** LE48401Z01-170-69717-409  
**Description:** DRILLING TEMPLATE (BOX 3)  
**ATP Serial Number:** PMH0000000EXT  
**Date:** 2026-05-13

**Image:** 2 of 3



Global Sales:  
Units 5 & 6, Oak Tree Place,  
Matford Business Park  
Exeter. Devon. EX2 8WA, UK.

Head Office:  
7178 Headley ST SE,  
PO Box 649  
Ada, MI 49301 USA.

**Part Number:** LE48401Z01-170-69717-409  
**Description:** DRILLING TEMPLATE (BOX 3)  
**ATP Serial Number:** PMH0000000EXT  
**Date:** 2026-05-13

**Image:** 3 of 3

