

Global Sales:  
Units 5 & 6, Oak Tree Place,  
Matford Business Park  
Exeter. Devon. EX2 8WA, UK.

Head Office:  
7178 Headley ST SE,  
PO Box 649  
Ada, MI 49301 USA.

**Part Number:** AGE03751-401

**Description:** GAUGE, GO/NO GO FLAP(GSE331) (BOX 2)

**ATP Serial Number:** PMH0000000EXT

**Date:** 2026-04-29

**Image:** 1 of 3

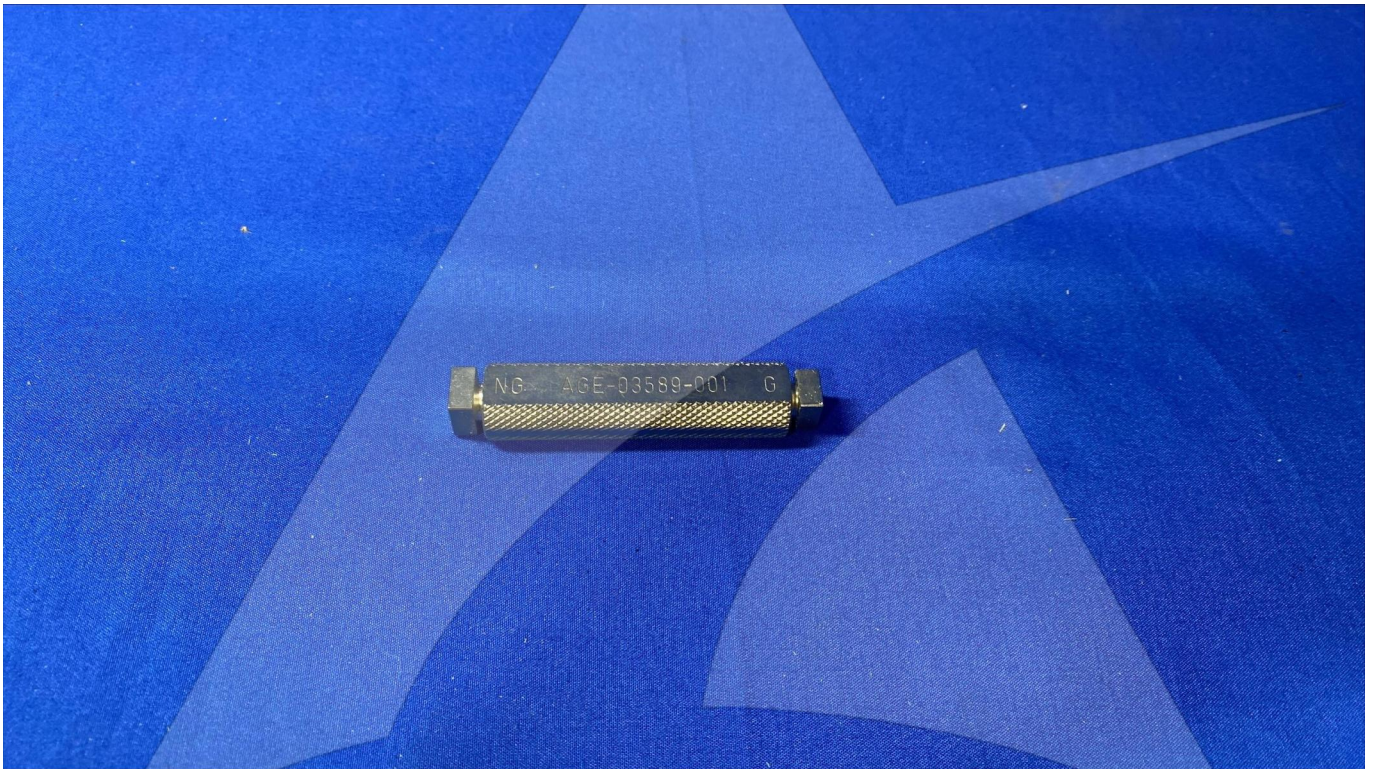


Global Sales:  
Units 5 & 6, Oak Tree Place,  
Matford Business Park  
Exeter. Devon. EX2 8WA, UK.

Head Office:  
7178 Headley ST SE,  
PO Box 649  
Ada, MI 49301 USA.

**Part Number:** AGE03751-401  
**Description:** GAUGE, GO/NO GO FLAP(GSE331) (BOX 2)  
**ATP Serial Number:** PMH0000000EXT  
**Date:** 2026-04-29

**Image:** 2 of 3



Global Sales:  
Units 5 & 6, Oak Tree Place,  
Matford Business Park  
Exeter. Devon. EX2 8WA, UK.

Head Office:  
7178 Headley ST SE,  
PO Box 649  
Ada, MI 49301 USA.

**Part Number:** AGE03751-401  
**Description:** GAUGE, GO/NO GO FLAP(GSE331) (BOX 2)  
**ATP Serial Number:** PMH0000000EXT  
**Date:** 2026-04-29

**Image:** 3 of 3

