

Global Sales:
Units 5 & 6, Oak Tree Place,
Matford Business Park
Exeter. Devon. EX2 8WA, UK.

Head Office:
7178 Headley ST SE,
PO Box 649
Ada, MI 49301 USA.

Part Number: AGE03751-401

Description: GAUGE, GO/NO GO FLAP(GSE331) (BOX 2)

ATP Serial Number: PMH0000000EXT

Date: 2026-06-25

Image: 1 of 3

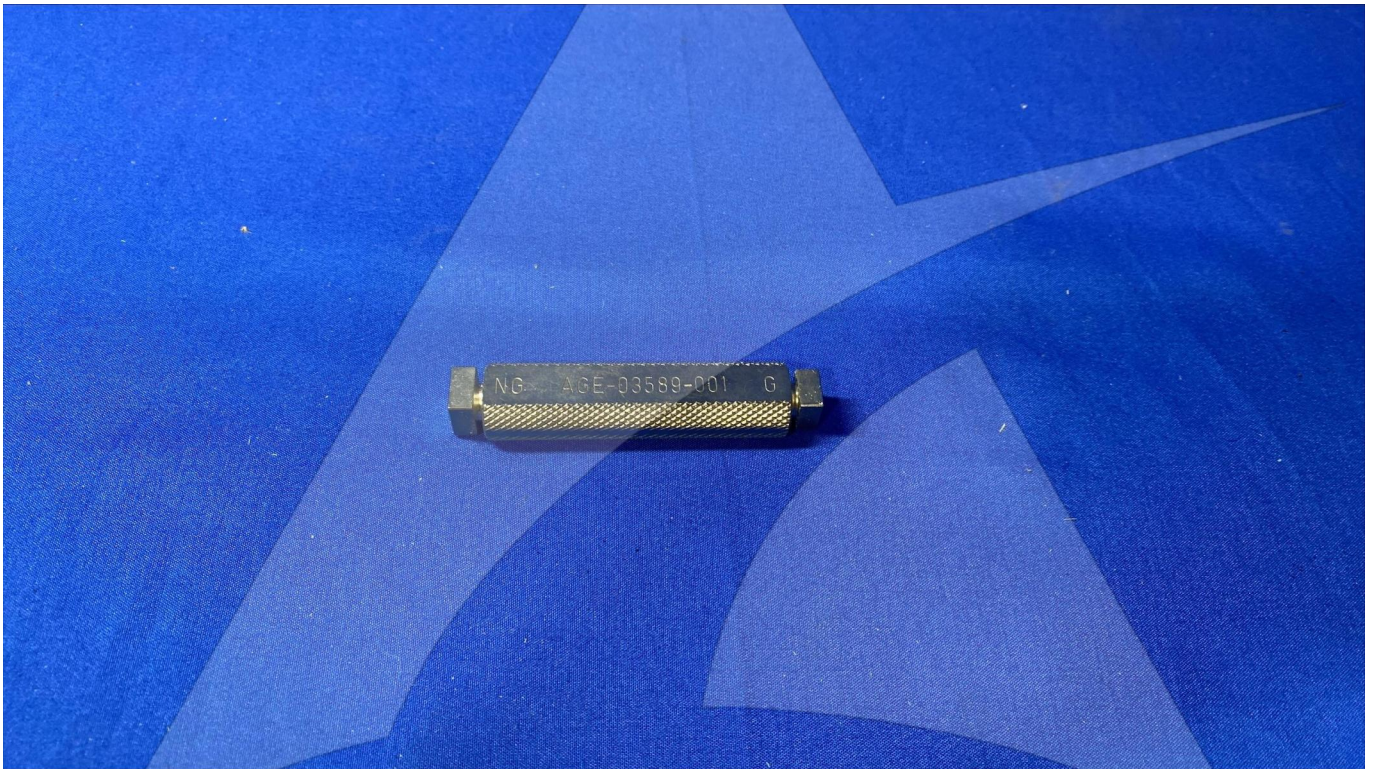


Global Sales:
Units 5 & 6, Oak Tree Place,
Matford Business Park
Exeter. Devon. EX2 8WA, UK.

Head Office:
7178 Headley ST SE,
PO Box 649
Ada, MI 49301 USA.

Part Number: AGE03751-401
Description: GAUGE, GO/NO GO FLAP(GSE331) (BOX 2)
ATP Serial Number: PMH0000000EXT
Date: 2026-06-25

Image: 2 of 3



Global Sales:
Units 5 & 6, Oak Tree Place,
Matford Business Park
Exeter. Devon. EX2 8WA, UK.

Head Office:
7178 Headley ST SE,
PO Box 649
Ada, MI 49301 USA.

Part Number: AGE03751-401

Description: GAUGE, GO/NO GO FLAP(GSE331) (BOX 2)

ATP Serial Number: PMH0000000EXT

Date: 2026-06-25

Image: 3 of 3

