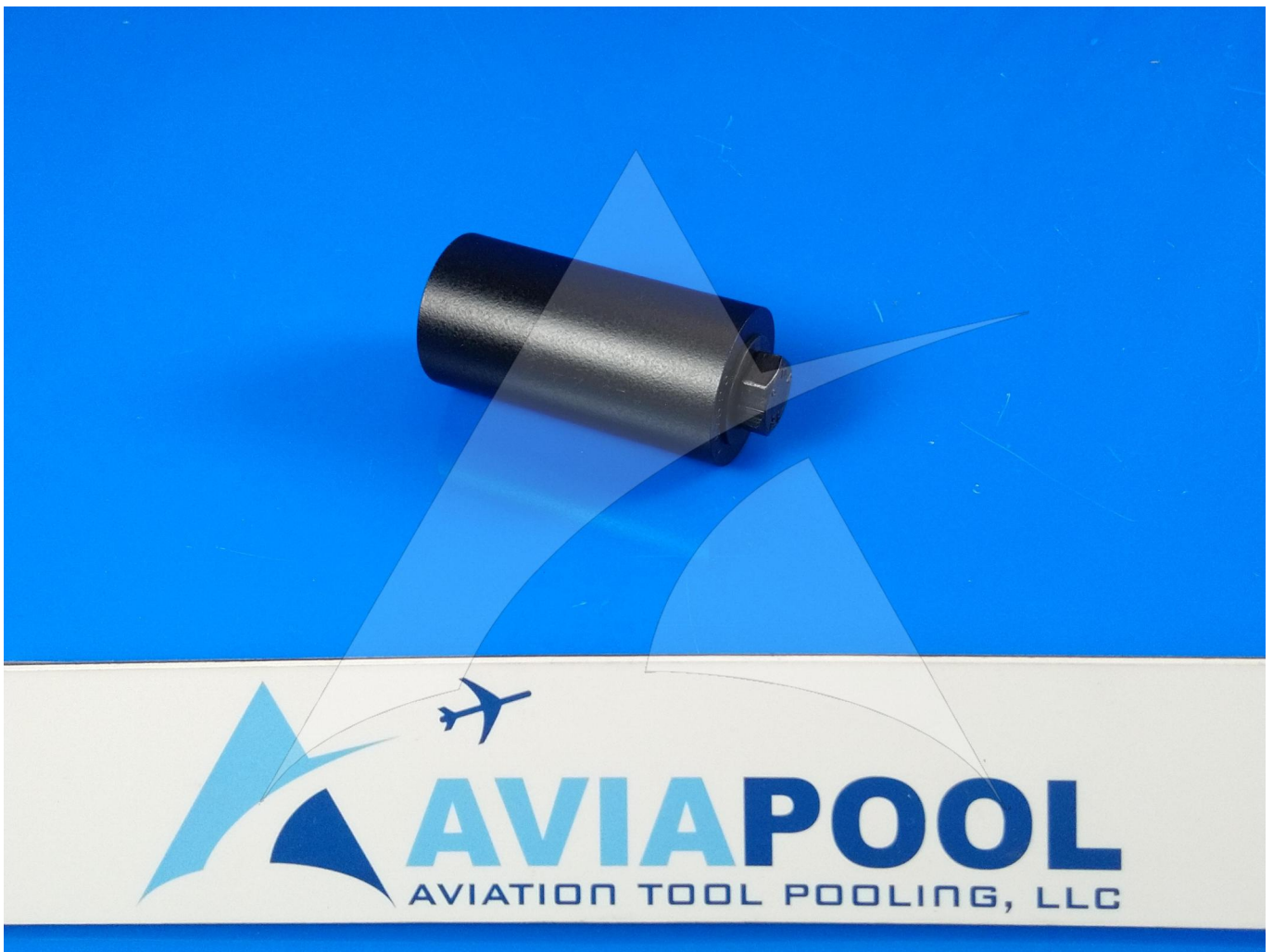


Global Sales:
Units 5 & 6, Oak Tree Place,
Matford Business Park
Exeter. Devon. EX2 8WA, UK.

Head Office:
7178 Headley ST SE,
PO Box 649
Ada, MI 49301 USA.

Part Number: C47525
Description: EXTRACTOR
ATP Serial Number: PMH0001376EXT
Date: 2026-04-27

Image: 1 of 4



Global Sales:
Units 5 & 6, Oak Tree Place,
Matford Business Park
Exeter. Devon. EX2 8WA, UK.

Head Office:
7178 Headley ST SE,
PO Box 649
Ada, MI 49301 USA.

Part Number: C47525
Description: EXTRACTOR
ATP Serial Number: PMH0001376EXT
Date: 2026-04-27

Image: 2 of 4

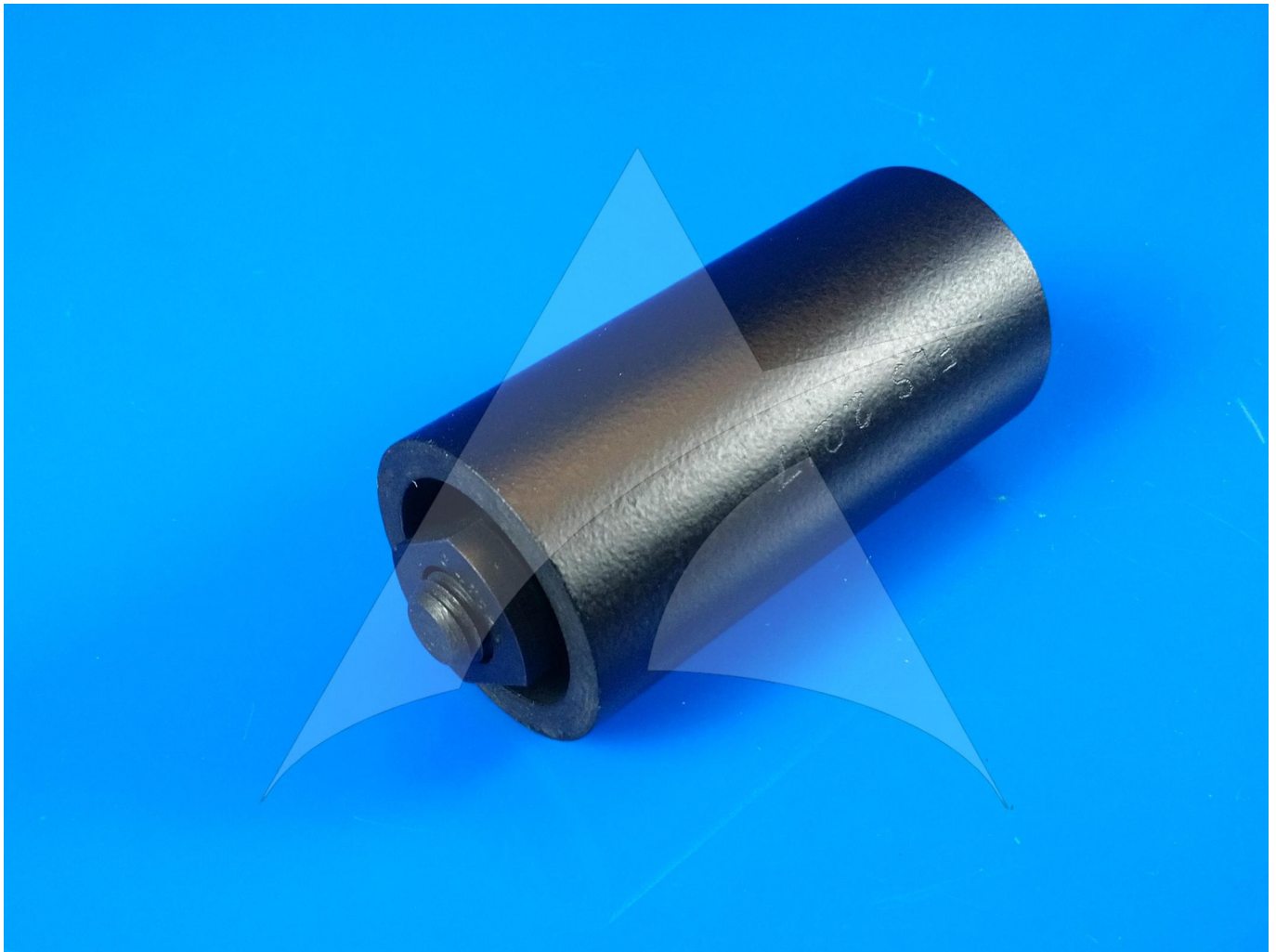


Global Sales:
Units 5 & 6, Oak Tree Place,
Matford Business Park
Exeter. Devon. EX2 8WA, UK.

Head Office:
7178 Headley ST SE,
PO Box 649
Ada, MI 49301 USA.

Part Number: C47525
Description: EXTRACTOR
ATP Serial Number: PMH0001376EXT
Date: 2026-04-27

Image: 3 of 4



Global Sales:
Units 5 & 6, Oak Tree Place,
Matford Business Park
Exeter. Devon. EX2 8WA, UK.

Head Office:
7178 Headley ST SE,
PO Box 649
Ada, MI 49301 USA.

Part Number: C47525
Description: EXTRACTOR
ATP Serial Number: PMH0001376EXT
Date: 2026-04-27

Image: 4 of 4

