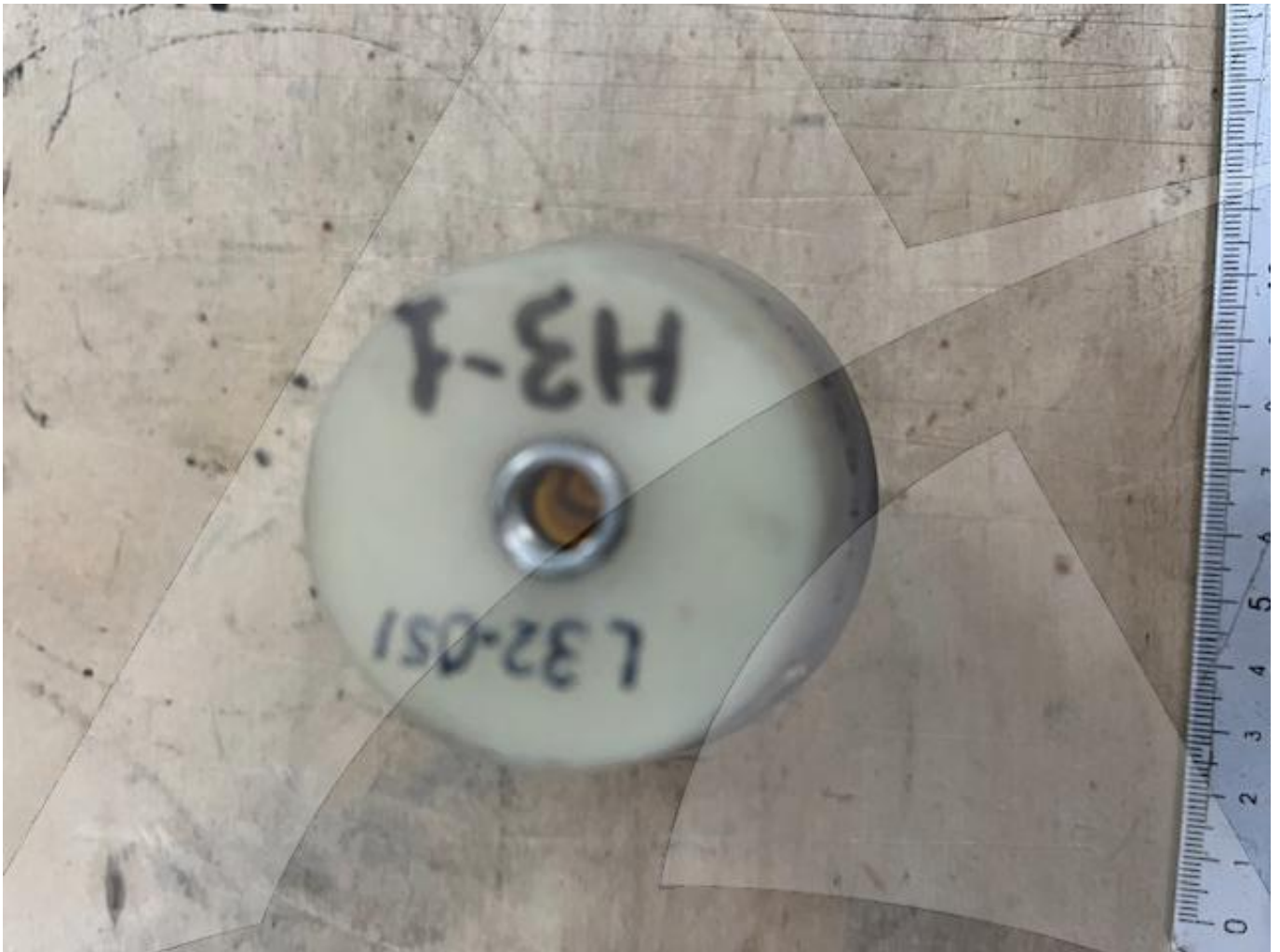


Global Sales:  
Units 5 & 6, Oak Tree Place,  
Matford Business Park  
Exeter. Devon. EX2 8WA, UK.

Head Office:  
7178 Headley ST SE,  
PO Box 649  
Ada, MI 49301 USA.

**Part Number:** PRE65B01202-1  
**Description:** TOOL ITEM 1632  
**ATP Serial Number:** PMH0000000EXT  
**Date:** 2026-06-08

**Image:** 1 of 5



Global Sales:  
Units 5 & 6, Oak Tree Place,  
Matford Business Park  
Exeter. Devon. EX2 8WA, UK.

Head Office:  
7178 Headley ST SE,  
PO Box 649  
Ada, MI 49301 USA.

**Part Number:** PRE65B01202-1  
**Description:** TOOL ITEM 1632  
**ATP Serial Number:** PMH0000000EXT  
**Date:** 2026-06-08

**Image:** 2 of 5

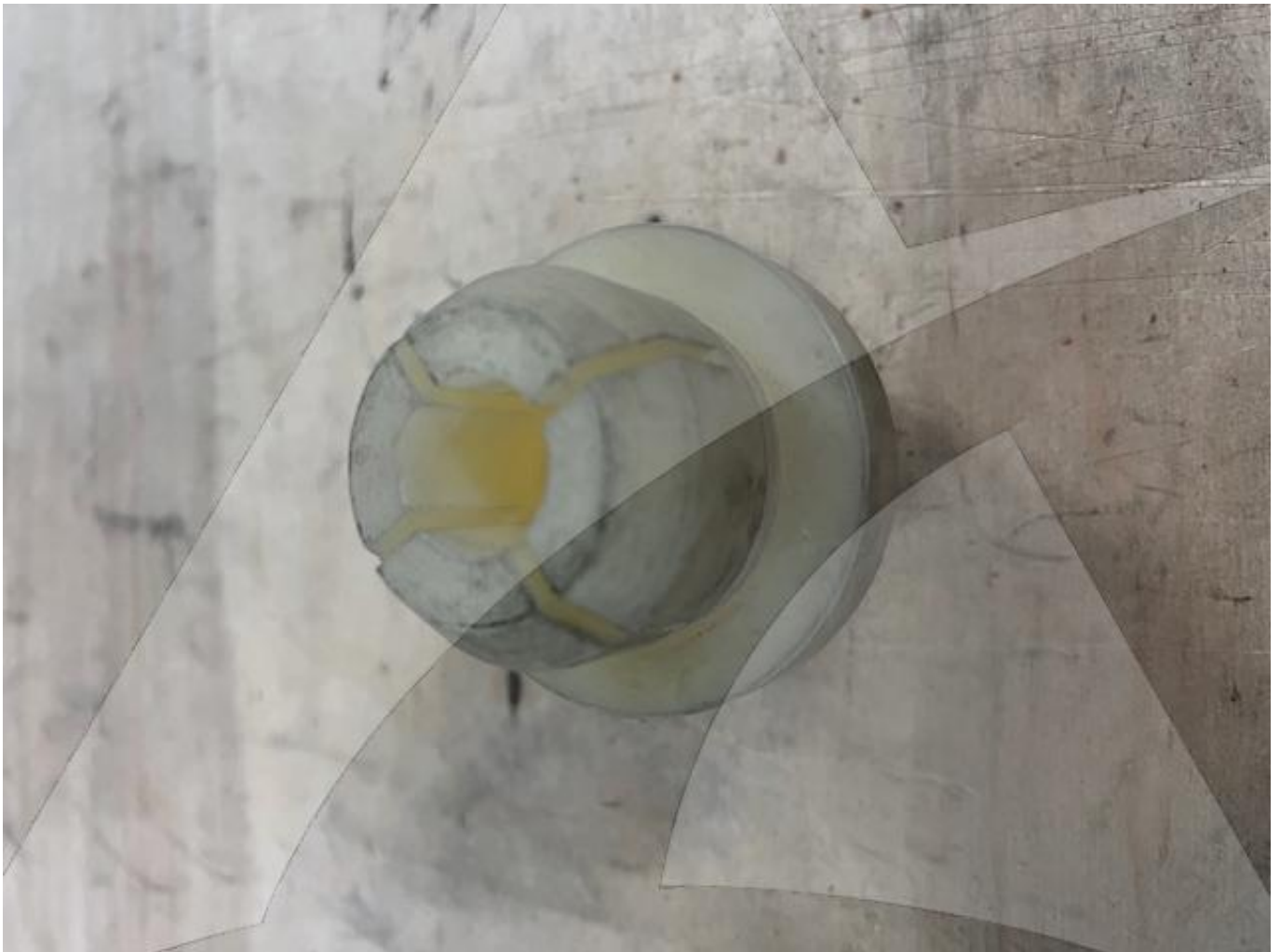


Global Sales:  
Units 5 & 6, Oak Tree Place,  
Matford Business Park  
Exeter. Devon. EX2 8WA, UK.

Head Office:  
7178 Headley ST SE,  
PO Box 649  
Ada, MI 49301 USA.

**Part Number:** PRE65B01202-1  
**Description:** TOOL ITEM 1632  
**ATP Serial Number:** PMH0000000EXT  
**Date:** 2026-06-08

**Image:** 3 of 5

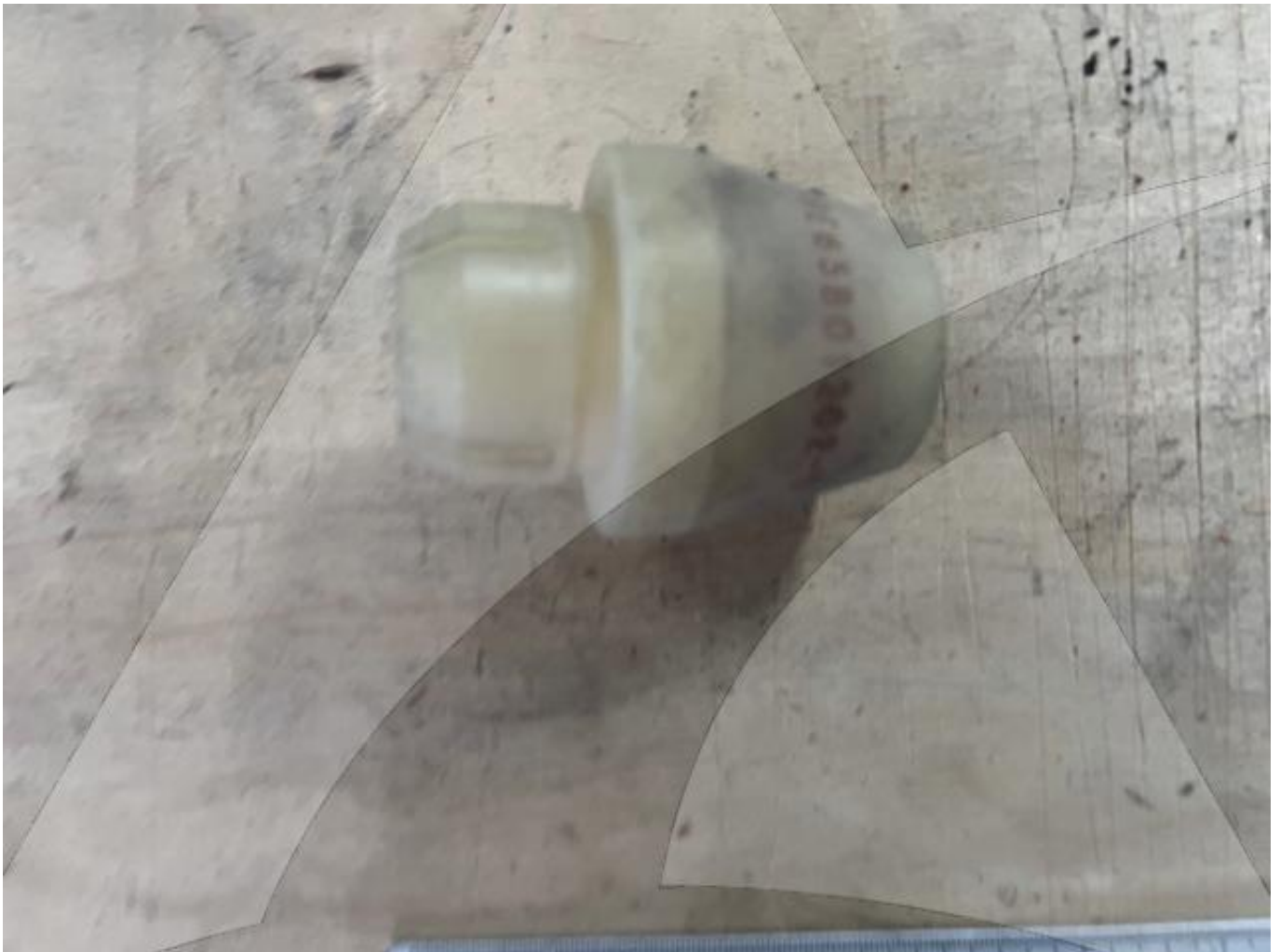


Global Sales:  
Units 5 & 6, Oak Tree Place,  
Matford Business Park  
Exeter. Devon. EX2 8WA, UK.

Head Office:  
7178 Headley ST SE,  
PO Box 649  
Ada, MI 49301 USA.

**Part Number:** PRE65B01202-1  
**Description:** TOOL ITEM 1632  
**ATP Serial Number:** PMH0000000EXT  
**Date:** 2026-06-08

**Image:** 4 of 5



Global Sales:  
Units 5 & 6, Oak Tree Place,  
Matford Business Park  
Exeter. Devon. EX2 8WA, UK.

Head Office:  
7178 Headley ST SE,  
PO Box 649  
Ada, MI 49301 USA.

**Part Number:** PRE65B01202-1  
**Description:** TOOL ITEM 1632  
**ATP Serial Number:** PMH0000000EXT  
**Date:** 2026-06-08

**Image:** 5 of 5

